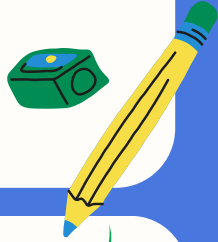




Wrockwardine Wood Infant and Nursery School Newsletter

'Love, Laugh, Learn'

20 September 2024. Autumn Term: Week 3



A Message from the Headteacher

Dear Parents and Carers,

What an exciting week we've had! Our school was buzzing with energy and joy as we welcomed the amazing '**Music Heroes**' to kick off our Celebration assembly on Friday. It was an absolute delight to see the children's faces light up as the band played a range of instruments including the bass guitar, electric guitar, keyboard, and drums. The talented musicians treated us to several familiar songs, and it wasn't long before the whole hall was filled with the sound of singing and dancing. It was truly a memorable experience!

We're thrilled to share that '**Music Heroes**' will be offering one-to-one music lessons for our children. This is a fantastic opportunity for children who have been inspired by the performance and are eager to learn more about music. For more details about the lessons and cost, please click here to access the letter posted in our communication hub.

<https://www.wrockwardinewoodinfant.org.uk/parents-area/parentscarer-communication-hub>

Thank you for your continued support, and we look forward to many more exciting events like this!



Kind regards,

Mrs Jenny Gascoigne

The children selected to be part of celebration assembly have gone the 'extra mile' this week to meet our school expectations:



We are kind to one another

We work hard together

We are honest with each other



To celebrate their achievements the children have had the opportunity to wear one of our special T shirts for the day. This is what each T shirt says:



It's Cool To Be Kind

I Worked Wonders

I Did the Right Thing



Attendance and Punctuality.

Do you want to know more about school attendance and punctuality?

Check out the latest communication from Mrs Gascoigne on our communication

www.wrockwardinewoodinfant.org.uk/parents-area/parentscarer-communication-hub

There is also more information on the attendance and punctuality page on our website:

www.wrockwardinewoodinfant.org.uk/discover-our-school/about-us/attendance-and-punctuality



Click on the image to access our page

Attendance award

This Weeks attendance cup winners were:

Swifts

97% attendance

Well done Swifts!



Important reminders.

Reporting your child's absence.

Please call the school office on **01952 387860** before **8:40am**.

Should you require to collect your child early from school for an appointment could

you please bring an appointment card or letter into the school office.



Collections.

In order to keep your child safe if we have not been notified in advance of any change in collection arrangements we will not allow your child to leave without contacting you first.



Sports and Wellbeing

Sports Ambassadors

As part of our commitment to promoting a healthy lifestyle for all our children, we would like to gather information about the sports or activities your child participates in outside of school.

Understanding your child's involvement in extracurricular activities helps us support their overall well-being and development more effectively.

Your child may be involved in various types of sports, including but not limited to:

Team Sports: Such as football, cricket, or hockey.

Individual Sports: Such as swimming, tennis, or martial arts.

Arts and Cultural Activities: Such as dance, music, or theatre.



Please provide us with the following information:

The types of activities your child is involved in.

Any specific achievements or milestones they've reached.

Your child's level of involvement, e.g. attends weekly.

Please click on the link below to access a short questionnaire.

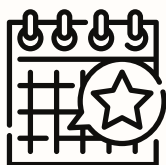
<https://forms.office.com/e/mdT9X9Ma6T>

Thank you for your support,

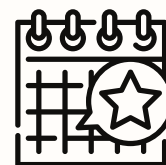
Miss Bilton

PE Subject Leader





Key Dates



Date	Event
18 September	SENDCo Parent Meetings
19 September - 24 October	Family Learning Commences <i>'Learning Through Play'</i>
W/C 23 September	Meet the Teacher sessions Click here for more information.
23 September	Harvest collections from today
1 October	Black History Month
3 October	National Poetry Day
9 October	School Photo Day (<i>More details to follow.</i>)
10 October	World Mental Health Day
14 October	Recycle Week
21-22 October	Year 2 Residential to Edmond Hall Click here for more information
W/C 21 October	Diwali activities
21 October	Apple Day
25 October	Last Day of Autumn first half term
28 October - 1 November	Half term
4 November	Return to School

For more term dates please click [here](#).

Don't forget to find out about your child's learning this week from the class page on the website.



Go to: <https://www.wrockwardinewoodinfant.org.uk>
and click on the 'Classrooms' tab

Harvest

From the week Commencing 23 September we will be collecting donations for our harvest table.

We would appreciate any dried or tinned goods that will be donated at our local food bank for families in need.

Thank you in advance.



Meet the Teacher

During the week Commencing 23 September, parents / carers have the opportunity to join their child's class teacher in the school hall for one of our 'Meet the Teacher' sessions.

Please access the parent communication by clicking on the link below.

<https://www.wrockwardinewoodinfant.org.uk/parents-area/parents-communication>

Letters will also be sent out next week.

Influenza Information

All Primary school-aged children, including children in Specialist Schools, in Reception Year to Year 6 (aged 4 to 10 years old on 31st August 2023) will be offered the vaccine.

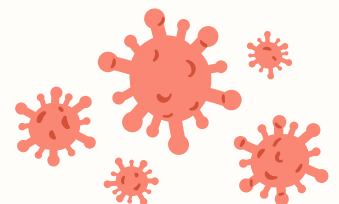
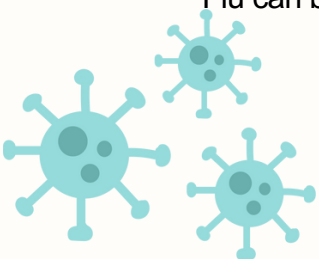
This vaccination programme is in place to help protect your child against flu.

Flu can be an unpleasant illness and sometimes causes serious complications.

Please follow the link for an informative video from NHS

[Flu Heroes - Nasal Flu Spray for Kids](#)

A letter will be sent out to parents with more information and a consent form soon.



SEND News

A Message from the SENDCo

Welcome to the academic year 2024-2025

For those of you who don't know me, let me introduce myself.

I am Mrs McNamee and I am the Special Educational Needs & Disability Co-Ordinator (SENDCo) at Wrockwardine Wood Infant School and Nursery.

I would like to take this opportunity to provide you with some information regarding Special Educational Needs and Disability (SEND)

Further information can be found on our School Website on the SEND Page. This also links to the Local Offer provided by the Local Authority.

<https://www.wrockwardinewoodinfant.org.uk/discover-our-school/learning/send>

We are proud of our inclusive provision for our children and have successful practice in supporting children effectively to unlock barriers to their learning and enable them to succeed.

We work in partnership with other professionals from the Education services and the Health teams across Telford and Wrekin.

I would like you to know that we have an open door policy in school and if you are ever concerned about your child's progress or provision in school then please make an appointment through the school office to meet with me.

I will also be offering SEND Coffee Mornings throughout the year which will provide opportunities for us to meet together to discuss your child's individual targets and also I will be inviting some guest speakers to provide advice and support for families. Please come along.



Mrs McNamee
SENDCo

Areas of SEN & Disability

Special Educational Needs and Disability and provision can be considered as falling under four areas of need:

1. Communication and Interaction
2. Cognition and Learning
3. Social, Mental and Emotional Health
4. Sensory and/or Physical

SEND provision at our school

Some of our children in School and Nursery have special educational needs which require special educational provision to be made for them. That which is additional to or different from the educational provision made generally for children of their age. This could be:

- Learning which is adapted within their own classroom
- An intervention programme run individually or within a small group
- The use of specialist resources
- The use of personalised advice from other professionals

As parents, you will have been informed if your child requires additional provision to be made for them.

SEND Support

Your child may be on the SEND register at SEND Support. This means that there will be an Individual Provision Map (IPM) in place for them with targets and interventions set by the class teacher to enable your child's needs to be met and to ensure they make steps of progress in their learning.



School Admissions 2025



Reception & Junior Applications



For Reception or those transferring from Infant to Junior (Year 3) in September 2025, applications will be available via the Telford & Wrekin website from **12th September 2024**.

All parents will need to apply via the parent portal.

How to apply for a place in Year 3 in September 2025 (Infant to Junior transfer)

As your child is attending an infant school, you will need to apply for a junior school place in Year 3 for September 2025. To apply for a junior school place you must apply online at www.telford.gov.uk/admissions.

The closing date for all applications is **15 January 2025** or **31 October 2024** for children with an Education, Health and Care Plan. If you do not have access to a computer, you can go to your local library and use their computer facilities.

You can find out more information on www.telford.gov.uk/admissions where you will be able to find our Guide to Primary School Admissions.

Alternatively, please contact School Admissions at admissions@telford.gov.uk



Starting School?



How to apply for a Reception Place for September 2025

Please scroll to the next page...



Apply online
NOW



Starting school?

Closing date for applications:
15 January 2025

If your child has an Education, Health & Care Plan (EHCP) the closing date is **31 October 2024**.

www.telford.gov.uk/admissions

- You **must** apply if your child was born between 1 September 2020 – 31 August 2021.
- You **must** apply even if your child is attending a nursery or pre-school on a school site or you have a child already attending the school.
- You are advised to list four schools on your application form, including your catchment area/nearest school.
- Attending a nursery does **not** guarantee a school place.
- School places are allocated in line with oversubscription criteria.
- See website for more information **www.telford.gov.uk/admissions** or contact School Admissions at **admissions@telford.gov.uk**



Online safety

Digiduck says...



'Be a good friend
online,'

'Say kind things
to others,'



Brilliant photo!

'Can you
help me?'

'and make sensible
choices.'

