



NEWSLETTER

Website: [Home | Wrockwardine Wood Infant School & Nursery](#)

Telephone: 01952 387860

Email: A2116@taw.org.uk

Let's celebrate!

Here are the amazing children who have gone the 'extra mile' this week to meet our school expectations.

Our expectations are:

- 1) **We are kind to one another**
- 2) **We work hard together**
- 3) **We are honest with each other**

To celebrate their achievements the children have had the opportunity to wear one of our special T shirts for the day. This is what each T shirt says:

- 1) **It's cool to be kind**
- 2) **I worked wonders**
- 3) **I did the right thing**

We are so proud of the children we hope you are too!



Best Attendance



| | |
|----------|--------|
| Chicks 1 | 88.89% |
| Chicks 2 | 88.1% |
| Wrens | 95.17% |
| Robins | 96.3% |
| Swifts | 97.59% |
| Swallows | 93.79% |

This week's attendance cup winner is

Swifts Class

Well done and thank you parents for ensuring your child attends school everyday!

The Nest

Are you eligible for 30 hours funding? Go to: <https://www.gov.uk/30-hours-free-childcare>



Do you already have a preschool child with 30 hours funding?

Don't forget you have to confirm your details are up to date every 3 months.

<https://www.gov.uk/sign-in-childcare-account>



MusicShare Scheme in conjunction with
Telford & Wrekin Music are hosting
Telford Sings

Friday 15th March 2024
6-7pm
at Charlton School Theatre, Apley Avenue,
Wellington, Telford

**Tickets available from 9am on Monday
12th February
£3 per person**

[https://www.telfordtheatre.com/whats-on/
music/telford-sings-2024/5044](https://www.telfordtheatre.com/whats-on/music/telford-sings-2024/5044)

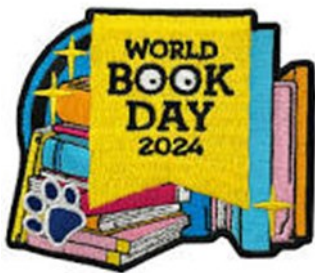


Congratulations Miss Frame

Congratulations to Robin's class
teacher Miss Frame who is getting
Married on Sunday and will return after
half Term as Mrs Mortier.

Wishing you both luck and happiness
for the future. Enjoy your special day.

World Book Day



World Book Day will take place on
Thursday 7 March 2024. This is an
annual celebration of authors,
illustrators, books and the joy of
reading.

Family Learning

Reception parents look out for the next
family learning registration form which
will be coming home with your child on
Monday.

Spring Family Crafts will be starting
after half term.

From Thursday 22nd February -
Thursday 21st March. 1 - 3 pm for 5
Weeks



Our Learning this week

Reception

This week in Reception the children have been learning about the celebration of Chinese New Year! The children have made their own lanterns and dragon dances.



Year 1

We have been taking part in the Big School Bird Watch. Year 1s have been observing and recording the different birds we have spotted. so far we have spotted 5 pigeons, 2 robins and 2 blackbirds. we noticed that this afternoon during the rain we didn't see any birds.



Year 2

As part of our learning in science we investigated which type of paper would be best to make a shopping bag. As scientists we focused on the skills of observing and measuring this week.

In maths we have been learning how to measure accurately. We applied our measuring skills to measure how many grams the paper could hold before it ripped.



The Nest

The Nest have been taking part in Music Minors this week. The children have been learning to recognise colours, move and sing to the music.



Important Reminders

To report your child's absence call the school office on 01952 387860 before 8:40am. Should you require to collect your child early from school for an appointment could you please bring an appointment card or letter into the school office.



In order to keep your child safe if we have not been notified in advance of any change in collection arrangements we will not allow your child to leave without contacting you first.



When dropping off and collecting children we ask parents to park with consideration for local residents, other road users and most importantly for children's safety. We ask parents not to access the school car park when collecting or dropping off children at anytime. Parking is available at Oakengates Leisure Centre.



Children should must not use the adventure playground before or after school. Parents are responsible for children's safety before and After school.



A reminder that adults and children must dismount from all wheeled vehicles at the school gate, so that everyone remains safe. Scooters and bikes can be left in the racks provided.



Dates for your diary

| Date | Event |
|---------------|--|
| 8 Jan –19 Feb | RSPB Big School Bird Watch |
| 12 –16 Feb | February Half Term |
| 13 Feb | Shrove Tuesday |
| 14 Feb | Saint Valentines Day |
| 19 Feb | Start of 2nd Half Spring Term |
| 1 March | Saint David's Day |
| 4 March | Incredible Eggs –duckling eggs arrival |
| 7 March | World Book Day |
| 7 March | Year 1 Visit Exotic Zoo |
| 10 March | Mothering Sunday |
| 11 –15 March | Parent Teacher Consultations |
| 11-15 March | British Science Week Theme: Time |
| 11-15 March | Big Walk and Wheel Week |
| 14 March | KS1 Football Festival |
| 15 March | Comic Relief |
| 17 March | St Patrick's Day |

SEND

Do you have a child or young person who has a disability or additional need? Follow the link for advice and support [Home - PODS \(podstelford.org\)](http://podstelford.org)



PODS aims to:

- provide emotional, practical and social support.
- help reduce isolation and increase well-being.
- provide an opportunity to participate in joint decision making on services.
- provide information to help increase knowledge of the SEND reforms and legislation.
- improve and influence those services affecting these families.

Phone number: 01952 458047 **Email:** support@podstelford.org
Address: PODS Hub, 1 Hawksworth Road, Central Park, Telford, TF2 9TU

Sports Newsletter

February 2024



10 By 10



What is 10 by 10?

10 by 10 is an initiative launched by Telford and Wrekin Council, aimed towards ensuring that all primary age children in Telford and Wrekin have the chance to participate in 10 activities. We are working with providers and partners in the local area to increase the opportunity for children to access these activities, and have developed a website so that children can track their progress.

Who can take part?

10 by 10 is aimed at primary age children, who live or attend a school in Telford and Wrekin. 10 by 10 offers may have an eligibility criteria, however there is no restriction on who can create their own 10 by 10 account or attend the majority of activities advertised in the activity directory. Click [here](#) to access a list of providers.

Did you know?

Children need to be physically active for **60 minutes a day**, with **30 minutes** of that activity taking place outside of school.

Why not access the **NHS** website for 10 Minute Shake Up games, information about active hobbies and sports, click [here](#) for everything you need to get your family moving

Events

| | |
|-------------------------------|------------------|
| Biggest Ever Football session | 8 March 2024 |
| Big Walk and Wheel | 11-22 March 2024 |
| Football Festival (Year 2) | 13 March 2024 |
| National School Sports Week | 17-24 June 2024 |
| Fun Sports Day | 21 June 2024 |

We will soon be taking part in the 'Biggest ever Football Session'

Watch this space for more information



Health Information

Health Protection Advice Measles

Cases of measles are increasing in the UK, including in the West Midlands, and it's likely that there will be cases in Telford in the near future.

Measles can have serious and sometimes fatal consequences, so make sure your children are up to date with MMR vaccinations, and ask your GP about catch-up jabs if needed. The MMR vaccine is highly effective at protecting against measles.

If you are concerned that your child has measles, please call your GP in the first instance, to reduce the risk of passing the disease to others in the waiting room.

More information on measles can be found and information on the MMR vaccine can be found by following the links below.

[Measles - NHS \(www.nhs.uk\)](http://www.nhs.uk)

[MMR \(measles, mumps and rubella\)](http://www.nhs.uk)

[vaccine - NHS \(www.nhs.uk\)](http://www.nhs.uk)

Is my child too ill for school?

It can be tricky deciding whether or not to keep your child off school or nursery when they're unwell.

There are government guidelines for schools and nurseries about managing infectious diseases. These say when children should be kept off school and when they shouldn't.

If you do keep your child at home, it's important to phone the school or nursery each day your child is absent unless the school or nursery agrees a different arrangement. You must let the school or nursery know that your child won't be in and give them the reason.

If your child is well enough to go to school but has an infection that could be passed on, such as a cold sore or head lice, let the school office know.

[Is my child too ill for school? - NHS \(www.nhs.uk\)](http://www.nhs.uk)

Shropshire and Telford and Wrekin Dental Advice Line

Do you have an urgent dental problem or need dental advice?



Are you looking for an NHS dentist for routine care?

Monday to Friday
0800-2100

01743 237916

Shropshire Community Health 
NHS Trust

Telford Public Health Nursing Service



Healthy you, Healthy Future

Telephone Number 0333 358 3328

Text 07520 619 053

School nurse 07520 619 051

Follow on twitter

@ShropPHNurse Open 9am-4.30pm
excluding bank holidays

BSAT & The Linden Centre Coffee Mornings/ Evening

Please come and join us for a cuppa, a slice of cake and a chat!

The BSAT Team are keen to hear your suggestions of how we can further support our students and their families.

We would also like to support parents/carers and our young people to better understand school systems, exclusion, procedures and signpost the different support agencies that are available.

We look forward to seeing you.

The BSAT Team

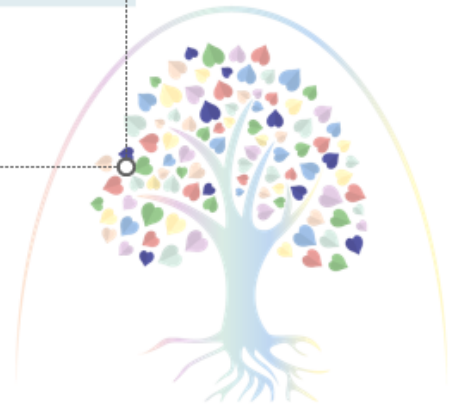
@ The Linden Centre

Oak Road
Overdale
Telford
TF3 5BT

BSAT Coffee Dates:

Wednesday 27th September
Wednesday 15th November
Wednesday 17th January
Wednesday 28th February
Wednesday 17th April
Wednesday 12th June

9.00 - 10.30am & 5.00 - 6.30pm



The Linden Centre



Thank you for your support

Your support has made a real difference to those in the
Armed Forces community.

To find out more about how your donation helps,
please visit rbl.org.uk/popyappeal



To WROCKWARDINE WOOD INFANT SCHOOL

Thank you for supporting the Royal British Legion Poppy Appeal.

Together we raised £174.17



Wrockwardine Wood and Trench Parish Council

are delighted to host children's workshops this February Half Term

ALL
ACTIVITIES
ARE FREE OF
CHARGE

Please note that all children must be accompanied by an adult.



Wrockwardine Wood and Trench Parish Council

WHEN?

Monday 12th February

10am -12pm or 1.30pm-3.30pm

Wizard School

(ages 6+)



Wednesday 14th February

10am - 12pm

Katie's Kids Kitchen

(ages 5-11)



Thursday 15th February

10am -11am

Fun Science

(ages 5-11)

WHERE?

At the Parish Centre
Wrockwardine Wood Infant
School on Church Road
TF2 7AH

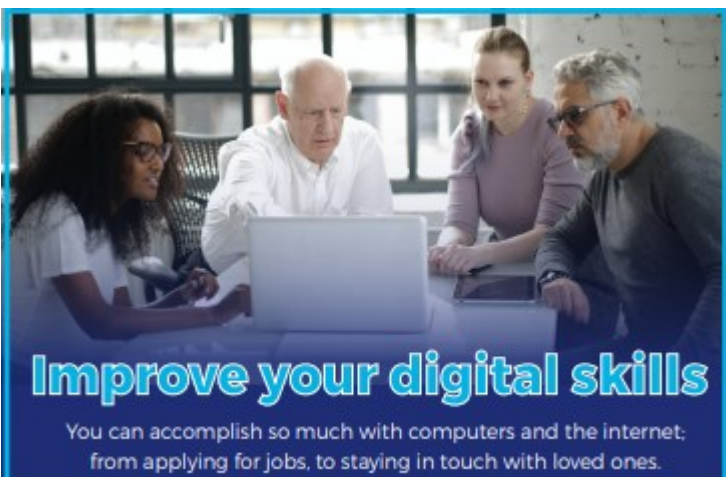
TO BOOK YOUR PLACE

01952 567040

OR VIA EMAIL:

admin@wrockwardinewoodandtrench-pc.co.uk

PLEASE FEEL FREE TO POP
INTO THE PARISH CENTRE
BETWEEN 10AM - 3PM,
MONDAY TO THURSDAY



Improve your digital skills

You can accomplish so much with computers and the internet, from applying for jobs, to staying in touch with loved ones.

Join our new skills sessions

Digital skills

Includes how to communicate on computers, creating and storing files and staying safe online

Microsoft Powerpoint

Learn how to use this tool as an effective communication tool used to help visually engage with your audience by adding images and interactivity

Microsoft Word

Create professional quality documents such as letters, reports and resumes using a range of templates and tools

Microsoft Excel

Learn to use spreadsheets where you can input data and analyse information

Get in touch to find out more

employability@telfordcollege.ac.uk



**TELFORD
COLLEGE**



Taster Sessions

Book onto one of our taster sessions and gain new skills

- Business admin
- Engineering
- Construction
- Education & early years
- Pre-access to higher education
- Getting that job

Try our
new short
courses



- Autism awareness
- Children & young people's mental health
- Introduction to bookkeeping
- Team leading
- Mental health in the workplace

Get in touch to find out more

employability@telfordcollege.ac.uk



**TELFORD
COLLEGE**





FREE COURSE*

Children and Young People's Mental Health

Increase your knowledge and understanding by learning strategies to support children and young people's mental health.

01952 642554

employability@telfordcollege.ac.uk

Sign up today

Sessions held at
11 Tan Bank Wellington TF1 1HJ

Ambition CENTRE
Ofsted Good Provider

Your one stop stop for all training and development
*T&C's apply

Distance Learning

Ambition CENTRE

Study in your own time & with no course fees on our distance learning programmes

Ofsted Good Provider

Level 2 - 12 Week Courses

Available to any adult 19+

- Awareness of Mental Health Problems
- Business Administration
- Children & Young People's Mental Health
- Counselling Skills
- Customer Service
- Data Protection & Data Security
- Dementia Care
- Dignity & Safeguarding in Adult Health & Social Care
- Equality & Diversity
- Introducing Caring for Children and Young People
- Improving Personal Exercise, Health & Nutrition
- Information Advice & Guidance
- Mental Health First Aid & Mental Health Advocacy in the Workplace
- Working with Individuals with Learning Disabilities
- Principles of End of Life Care
- Safe Handling of Medication
- Specific Learning Difficulties
- Principles of Team Leading
- Understanding Autism
- Understanding Behaviour that Challenges
- Understanding Domestic Abuse
- Understanding Nutrition & Health
- Understanding Safeguarding & Prevent
- Working with People with Mental Health Needs
- Workplace Violence & Harassment
- Understanding Menopause in the Workplace
- Introduction to Neuroscience in Early Years

Level 3 - 16 Week Courses

Available to any adult 19+ who doesn't have a level 3 qualification or anyone on benefits or with a salary below yearly national minimum wage (23+)

- Principles of Dementia Care
- Understanding Autism
- Understanding Mental Health
- Certificate or Diploma in Leadership & Management



For more information please contact the team on **01952 642335** or email us distancelearning@telfordcollege.ac.uk

ENHANCE

YOUR

CAREER

Free online courses

Certain postcodes excluded, available to anyone aged 19+

TELFORD COLLEGE
Ofsted Good Provider



Adult Care
Early Years
Teaching Assistant
Playwork
Residential Childcare



Fully Funded
Remote Diplomas

What is a remote diploma?

These remote diplomas are specifically designed to help you gain a level 3 qualification in 12 months.

Who can apply?

- Suitable for those with experience in the sector aged 19+
- Someone with excellent time management and organisational skills

What are the benefits?

- Remote access to resources, tools and recorded content
- Self-study at a time to suit you
- Time to reflect on practice
- Time to reflect on experiences in your area of work
- Weekly support and guidance from an assessor
- Assignments completed and uploaded online
- Employer and employee lead

Get in touch to find out more
employability@telfordcollege.ac.uk

HOCKEY

| DAY | 11AM-12.30PM U10S | 1PM-2.30 U12S |
|--------------------|---|---|
| Monday 12 February | Telford & Wrekin Hockey Club St George's Sports and Social Club TF3 8JU | Telford & Wrekin Hockey Club St George's Sports and Social Club TF3 8JU |

CONTACT
Telford & Wrekin Hockey Club
Email: mail@telfordhockeyclub.co.uk

INFORMATION

- Ages 8-12
- 30 children max per session
- Boys and girls together
- No experience necessary. Sticks provided but bring shin pads and goal sticks if possible. This is an outdoors activity so please dress for the weather and you may wish to email the organiser in case the activity is cancelled due to weather conditions.



Wild Telford With Shropshire Wildlife Trust 11am-2.30pm

Wild Telford allows your little ones to discover and fall in love with the nature that's right on their doorstep. With help from Shropshire Wildlife Trust, we'll explore nature crafts and wildlife activities like wild scavenger hunts, bug hunts, den building, and lots more. Every event will be different, be sure to bring a picnic or snacks and dress for the weather. Sessions run between 11am-2.30pm - join in for some or all of the sessions. Check the [What3Words](#) location for the meeting places.

| Date | Location | Activities |
|-----------------------|---|---|
| Monday 12 February | Apley Woods, Apley Castle TF1 6TH What3Words: kndrhw9pqr | Winter wildlife scavenger hunt, spotter sheets and activities |
| Tuesday 13 February | St Leonard's Church field | Nature collages and clay leaf printing, nature art |
| Wednesday 14 February | No session | |
| Thursday 15 February | Lightmoor, Squatters Cottage | Den building and camouflaged marshmallows |
| Friday 16 February | No session | |

These sessions are being hosted in partnership with the Shropshire Wildlife Trust. They are open to everyone of all ages young and old, children under age of 12 need to be accompanied by an adult. Please bring suitable clothing and refreshments.

CONTACT
Kathryn Jones
Email: kathryn@shropshirewildlifetrust.org.uk



CHINESE DANCE

| DAY | 1PM-3PM |
|--------------------|---|
| Monday 12 February | Chinese Arts & Culture Centre Unit E4 Stafford Park 15 Telford TF3 3BB |

CONTACT
Chinese Arts and Culture Centre
Email: info@culturekind.org.uk

INFORMATION
Have a go at Chinese arts and crafts, making lanterns with LED lights, calligraphy and painting.

WWW.TELFORD.GOV.UK/URBANGAMES

WWW.TELFORD.GOV.UK/URBANGAMES

Telford & Wrekin
COUNCIL
Protect, care and invest
to make a better tomorrow

URBAN GAMES

NO NEED TO BOOK

LOOKING FOR SOMETHING DIFFERENT TO DO THIS FEBRUARY HALF TERM?

Telford & Wrekin Council's urban games offer a free and safe space for everyone from toddlers through to teenagers, to learn new skills and spend time doing something fun during half-term.

Sports sessions in your local park including football, cricket, cycling, hockey, Chinese dance & arts and lots of others. Hosted by qualified coaches, there's something for everyone at community centres, sports centres and local parks.

Sessions are completely FREE to attend - funded via the council's Safer & Stronger Communities programme with support from the Police and Crime Commissioner and the Government's 'Leveling up Fund'.



WWW.TELFORD.GOV.UK/URBANGAMES

WWW.TELFORD.GOV.UK/URBANGAMES

WWW.TELFORD.GOV.UK/URBANGAMES



There are sessions taking place across Telford and Wrekin throughout half term both indoors and out. Why not grab a friend and head down to see what's happening near you?

To help you find them, we have listed the [what3words](#) location, it's an app that lets you pinpoint a location within three meters.

Download the app from what3words.com



NO NEED TO BOOK

GENERAL INFORMATION

- Sessions are free of charge.
- No need to book but are places limited depending on the activity - check for details.
- Please bring wet weather clothing and plenty of drinks.
- Programme may be subject to change (sessions maybe cancelled due to unsuitable weather/playing conditions).

| MISGA MULTI-USE GAMES AREA | ADDRESS |
|----------------------------|--|
| Aqueduct | Southall Adjacent to 99 Pleasant Road, TF4 3RF What3Words: bead.cook.fog |
| Brookside | Off Beasconfield (By Windmill Primary), Brookside TF3 1LW What3Words: jaggles.surface |
| College | Off Millfield Road, Wellington TF1 1PX What3Words: helved.reasons |
| Donnington | Donnington recreation ground, School Road TF2 8JA What3Words: croaching.lined |
| Lightmoor | Dak Tree Centre, Lightmoor Way, Lightmoor TF4 3EG What3Words: kagw.receding |
| Malinslee | Off Burnel Road, Malinslee TF3 2SF What3Words: comrinded.grants |
| Randley | Adjacent to 81 Boulton Grange, Randley, TF3 2LB What3Words: comrinded.grants |
| St Georges | 74/76 Freiston Avenue, St George's TF2 9EQ What3Words: whelving |
| Stitchley | Adjacent to 67 Cullington, Stitchley TF3 1UN What3Words: rebates.commercial |
| Sutton Hill | Off Southgate (through alley way), Sutton Hill TF7 4RF What3Words: custom.drove |
| Woodside | End of Park Lane, Woodside, TF7 5HR What3Words: wade.park |

AFC TELFORD UNITED - MULTISPORT

| DAY | 2.30PM-4PM |
|-----------------------|--|
| Monday 12 February | Oskengates Leisure Centre Sports Hall - New Rd, Wockwardine Wood, Telford TF2 7AB |
| Tuesday 13 February | Abraham Darby Sports and Leisure Centre Sports Hall - Ironbridge Rd, Telford TF7 5HX |
| Wednesday 14 February | Wrekin College Sports Hall - Sutherland Road, Wellington, Telford TF1 3BH |
| Thursday 15 February | Oskengates Leisure Centre Sports Hall - New Rd, Wockwardine Wood, Telford TF2 7AB |
| Friday 16 February | Abraham Darby Sports and Leisure Centre Sports Hall - Ironbridge Rd, Telford TF7 5HX |

CONTACT
Ian Preston, AFC Telford Foundation
Tel: 07542 89769
Email: found@afctu.co.uk



INFORMATION
• Ages 8-16

SHROPSHIRE CRICKET

| DAY | 1PM-2.30PM |
|-----------------------|--|
| Monday 12 February | Oskengates Leisure Centre sports hall - New Road, Wockwardine Wood, Telford TF2 7AB |
| Tuesday 13 February | Abraham Darby Sports and Leisure Centre sports hall - Ironbridge Road, Telford TF7 5HX |
| Wednesday 14 February | Wrekin College sports hall - Sutherland Road, Wellington, Telford TF1 3BH |
| Thursday 15 February | Oskengates Leisure Centre sports hall - New Road, Wockwardine Wood, Telford TF2 7AB |
| Friday 16 February | Abraham Darby Sports and Leisure Centre sports hall - Ironbridge Road, Telford TF7 5HX |

CONTACT
Sacha Lee
Tel: 07875 730151
Email: sacha.lee@shropshirecricketboard.co.uk



INFORMATION
• Ages 8-16

TELFORD BIKE HUB

| DAY | 11AM-5PM | 1.30PM-3.30PM |
|----------------------|---------------|---------------|
| Thursday 15 February | Woodside MUGA | Aqueduct MUGA |

CONTACT
Telford Bike Hub
Tel: 01952 380413
Email: telfordbikehub@telford.gov.uk



INFORMATION
• Bike skills
• Scooter skills
• Dr Bike - bike repair service
• All bikes, equipment and bike parts included



BMX

| DAY | 10AM-12NOON | 3PM-3PM |
|-----------------------|------------------------------------|---------------------------------|
| Monday 12 February | Donnington BMX Track | Donnington Skatepark |
| Tuesday 13 February | Hills Lane BMX Track | No session |
| Wednesday 14 February | Leagernary BMX Track | Leagernary BMX Track |
| Thursday 15 February | Malinslee BMX Track | No session |
| Friday 16 February | Telford Flyers BMX Track (Coached) | Telford Flyers BMX Track (Race) |

*Riders MUST attend at least 1 pump track session prior to the Friday race session

| LOCATION | ADDRESS |
|--------------------------|---|
| Donnington BMX Track | Broad Oaks, Off Wellington Road, Donnington TF2 8AW What3Words: abbas.upward |
| Donnington Skatepark | Off School Road, Donnington What3Words: ansoching.queen |
| Hills Lane BMX Track | Rear of 108 Hills Lane Drive, Mackley, TF7 4BY What3Words: chook.struggle |
| Leagernary BMX Track | Off Andrea Clark, Leagernary, Telford, TF1 6UY What3Words: coral.zeals |
| Malinslee BMX Track | Off Alma Avenue, Malinslee, Telford, TF4 2DU What3Words: leagery.rise |
| Telford Flyers BMX Track | Duce Drive, Dawley, Telford TF4 2DA What3Words: jknt.zeals |

CONTACT
Telford Flyers BMX
Martin Brown
Email: telfordflyers@gmail.com



INFORMATION
• Ages 8-16
• Max 15 riders
• Own bike/helmet required
• Long sleeves/trousers

